


" " " " - 111 .
 " " " " - 43 ;
 " " " " - 17 ;
 " " " " - 1 ;
 4 ;
 " " " " - 9;
 " " " " - 1;
 " " " " " ;
 " " " " - 36 .
 2 .



31.05.2014 . 27,1 %

	31.05.13 .	31.05.14 .	-
	1230	1258	28

ИНФОРМАЦИОНЕН БЮЛЕТИН

2014 .

2014 .

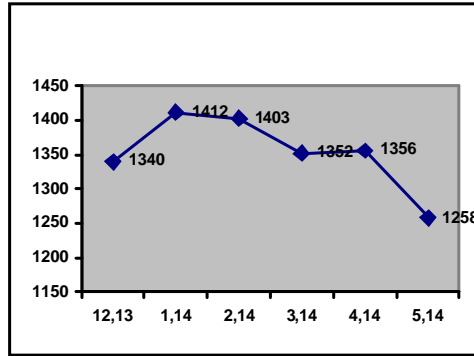
31.05.2014

- 1258

98

662 (52,6%)

0,7



171 (13,6%)

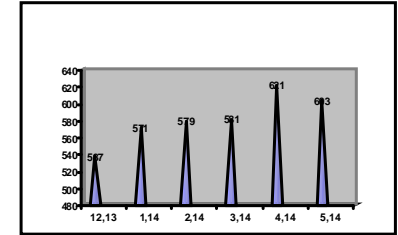
29 . -

2014 . (10,5%).

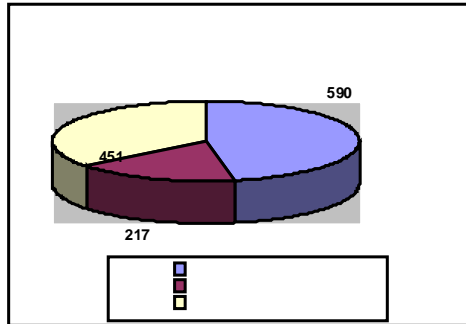
0,5

(47,9%).

2014 . (2,9%).



29 . - 13,6 % 14,1
 %
 30 49 . - 43,8 %
 44,5 % 2014 .
 50 . - 42,6 % 41,4



46,9 % 46,8 %
 - 17,2 %
 17,1 %
 - 35,9 % 36,1 % 2014 .

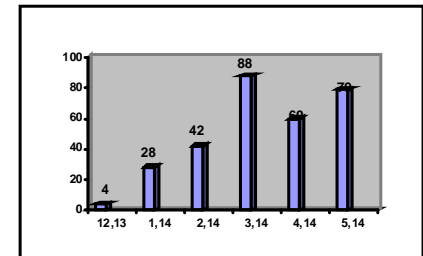
- 3,6 % 3,5 %
 - 62,1 % 61,8 % 2014 .
 - 34,3 % 34,7 %

2014 .

2,1
 - 35 (2,8)
 (2,8 %).
 0,1 .04.2014 .
 50 - 536 (42,6 %)
 26 1,2 .04.2014 .
 39 - 432 /34,3 %/.
 0,4 .04.2014 .

2014 .

72 - 70 50



- 27
 0 0 23
 1
 - 0;
 - 52
 - 28 ;

- - 0; - 66 .